

1 LASER STENCIL

- In this note, one 152.4x199.4mm size (red colour) PCB is used as an example.
- The laser stencil is then 172.4x219.4 size (blue colour) . Extend 10mm at each side of PCB.
- Each corner area has one fiducial hole (4mm diameter size). The centre of the hole is 5mm away from the corner point.

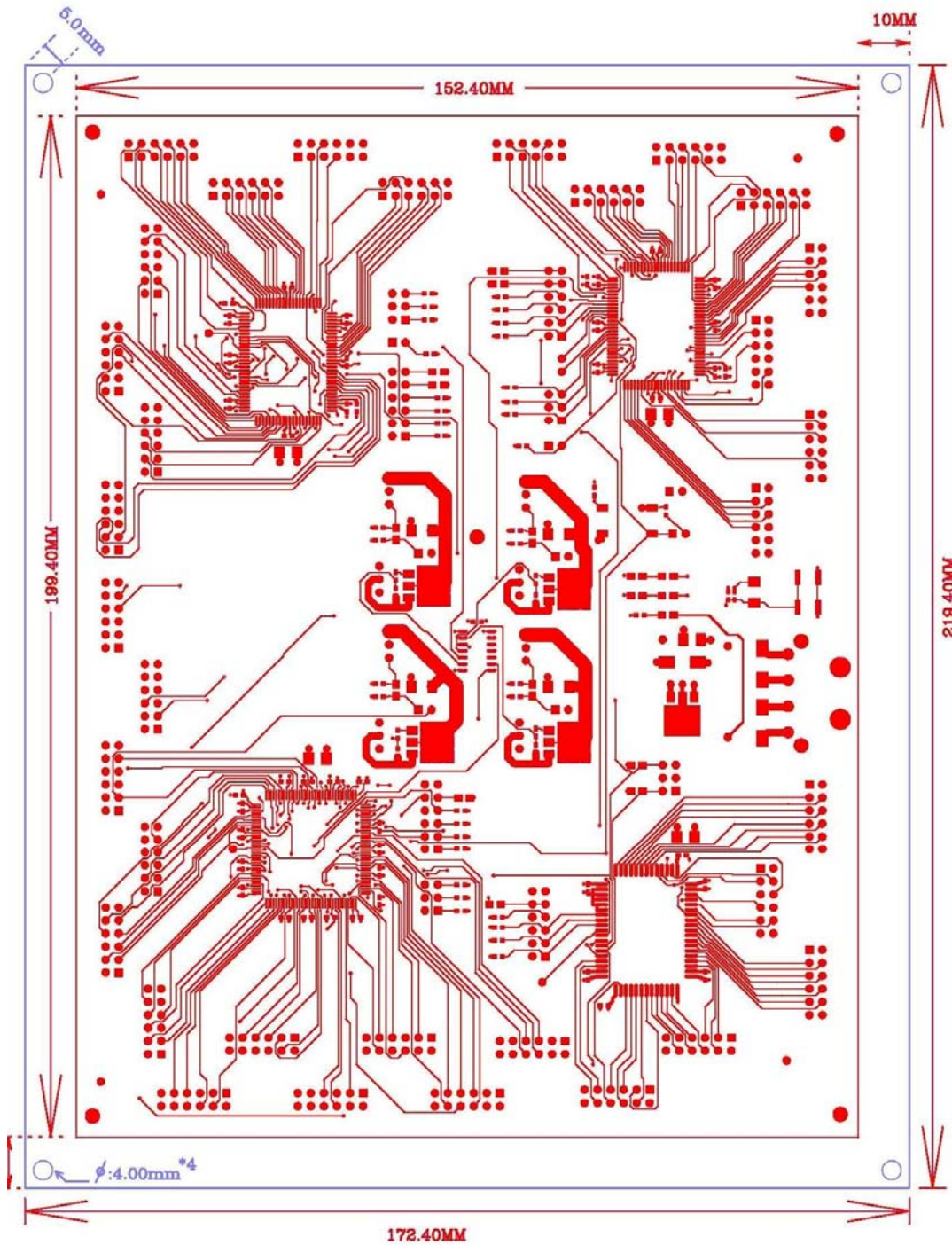


Figure 1 PCB board with stencil

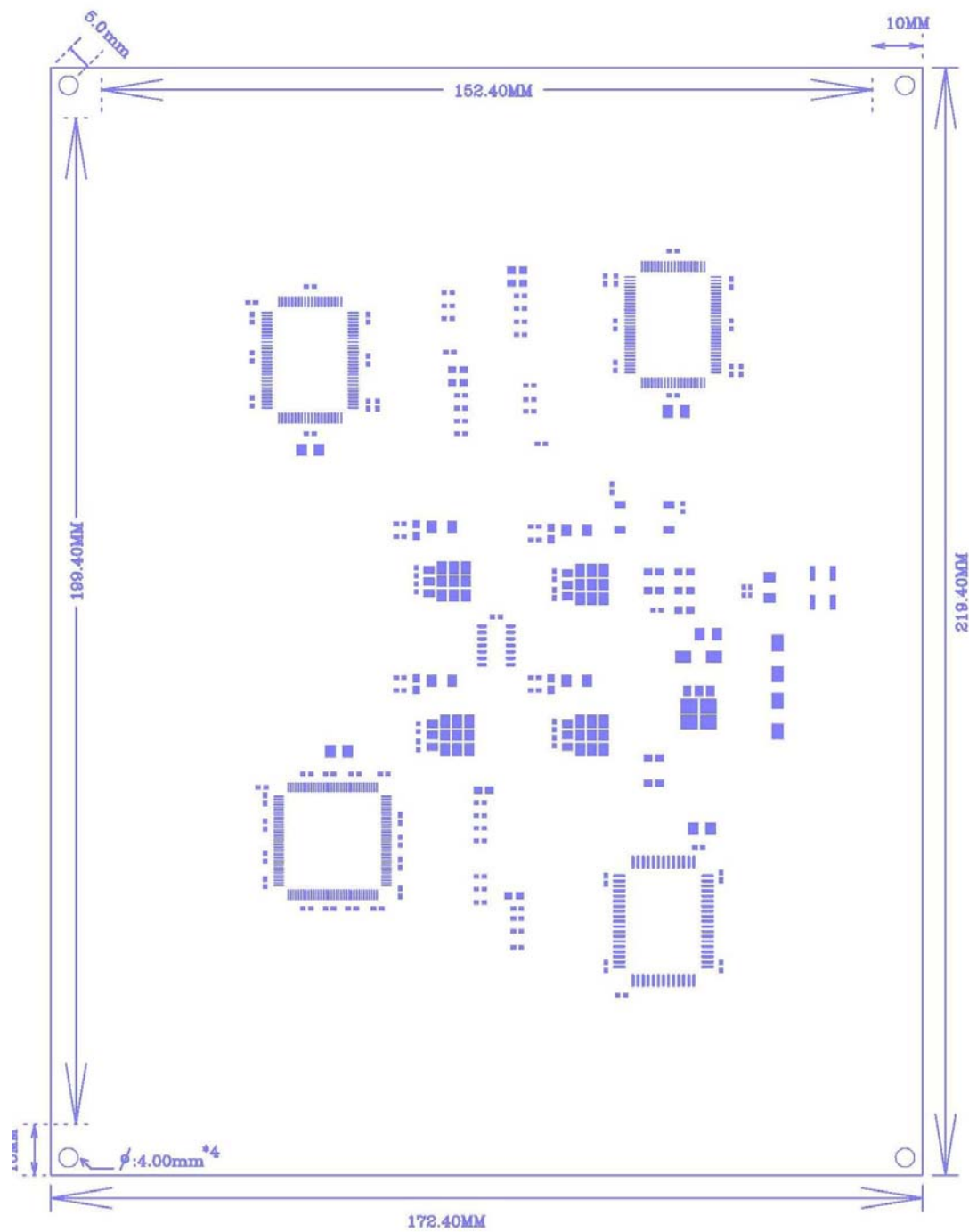


Figure 2 Laser stencil

2 FRAMED LASER STENCIL (300X400MM)

The laser stencil is 220x320mm size and it is permanently mounted in 300x400mm size frame using border to tightly stretch it.

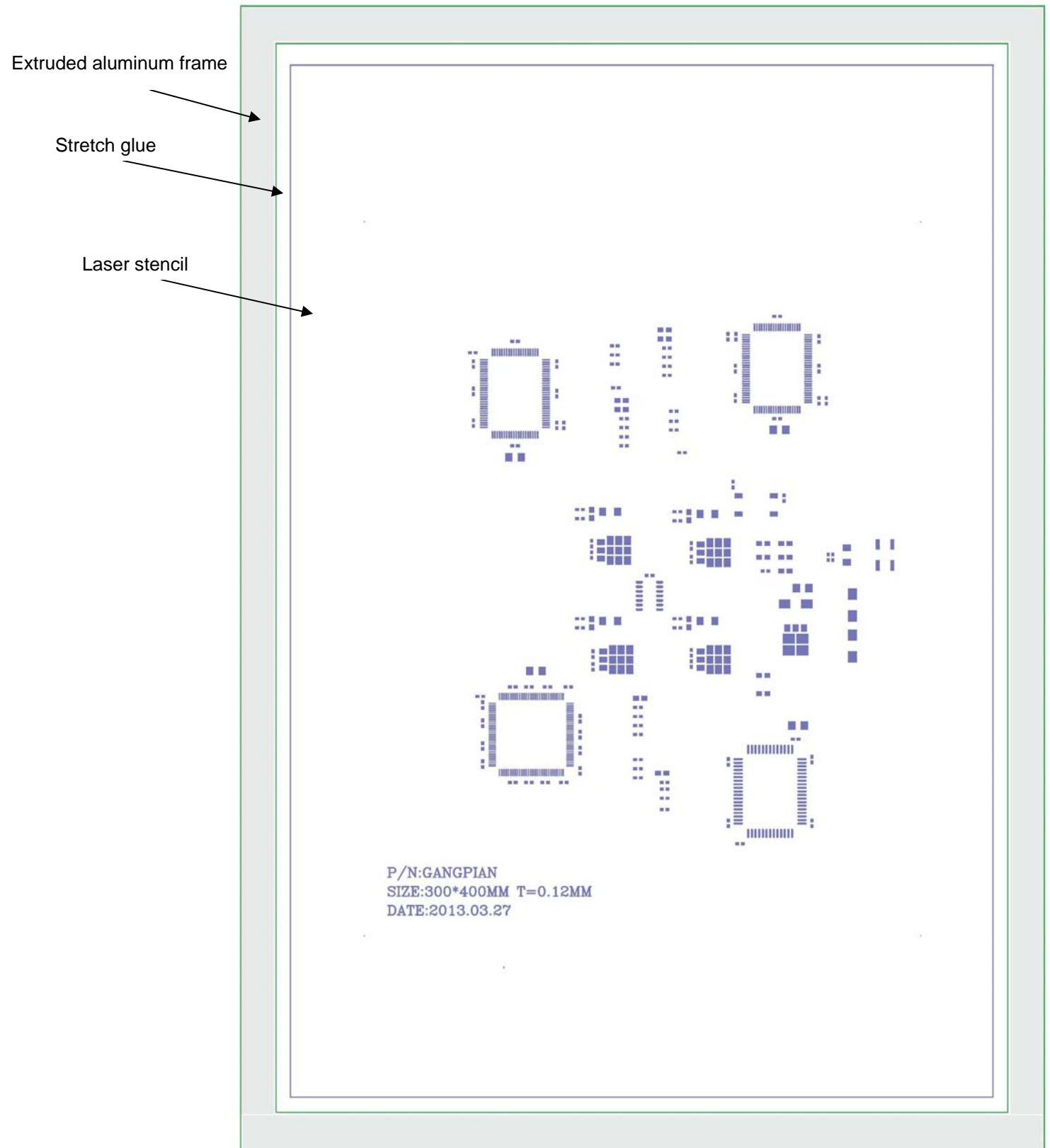


Figure 3 300x400mm framed stencil

3 FRAMED LASER STENCIL (370X470MM)

280x380mm stencil foils permanently mounted in 370x470mm size frame.

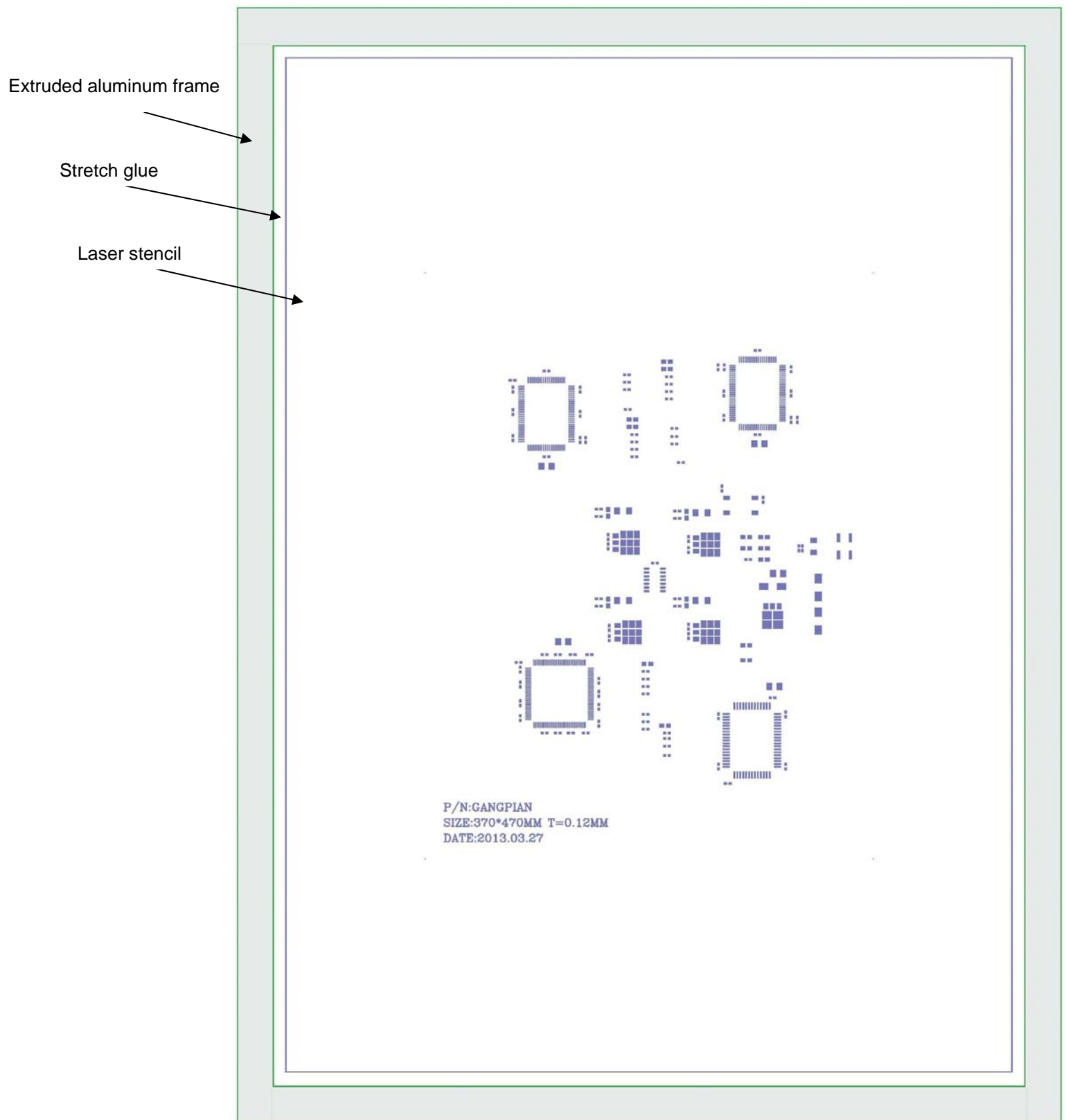


Figure 4 370x470 framed stencil

4 FRAMED STENCIL IMAGES

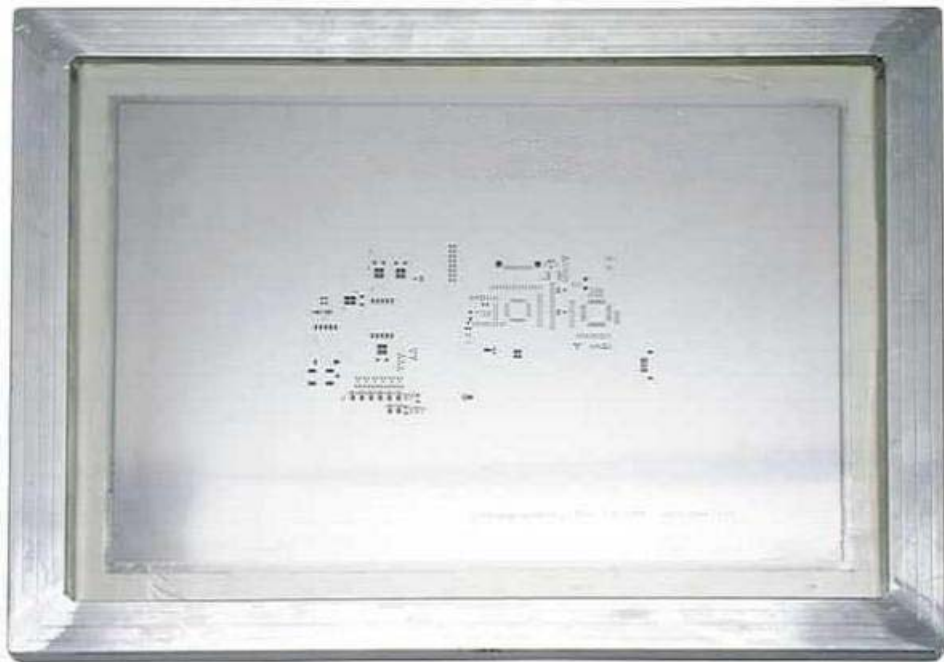


Figure 5 300x400 framed stencil image



Figure 6 370x470mm framed stencil image